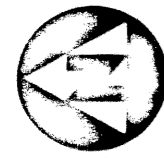


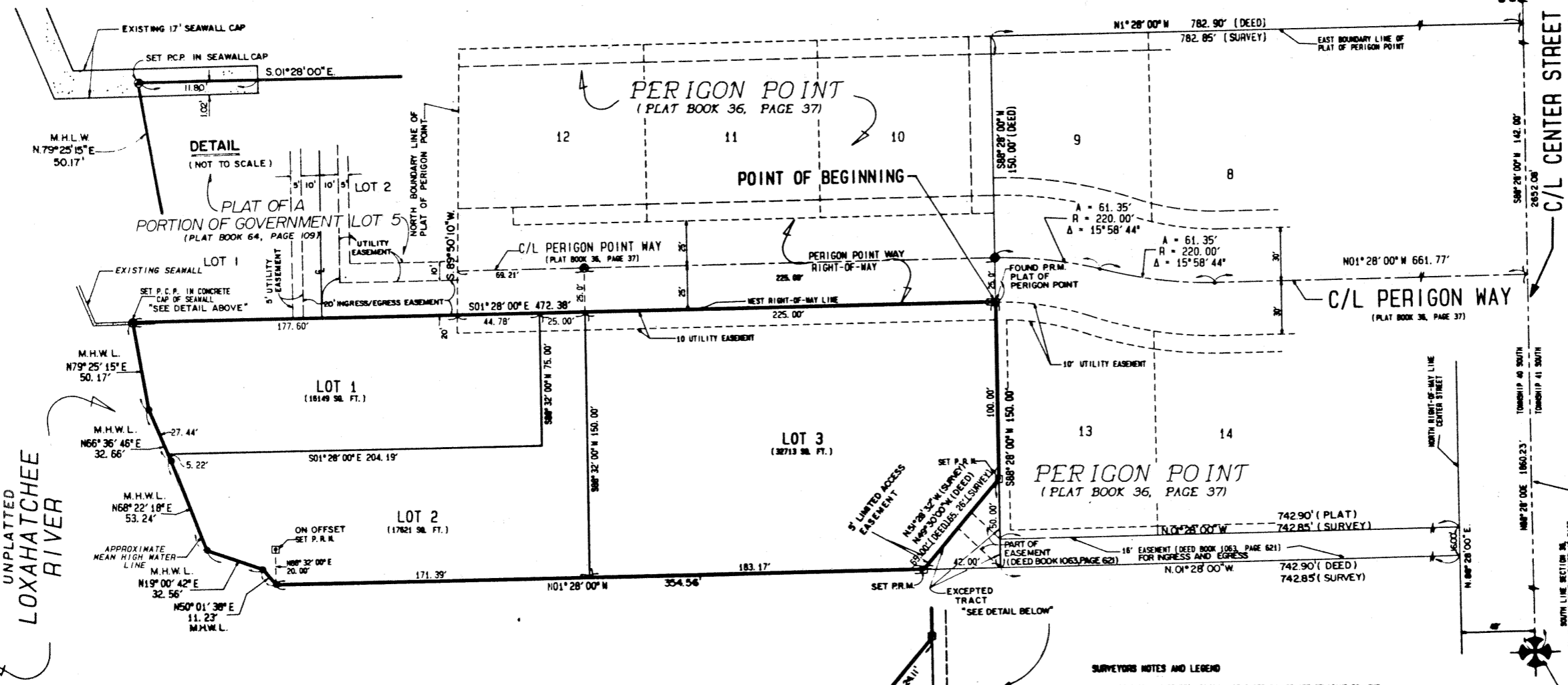
70 66

# PERIGON POINT ADDITION

LYING WITHIN  
GOVERNMENT LOT 5, SECTION 36,  
TOWNSHIP 40 SOUTH, RANGE 42 EAST,  
TOWN OF JUPITER, PALM BEACH COUNTY, FLORIDA

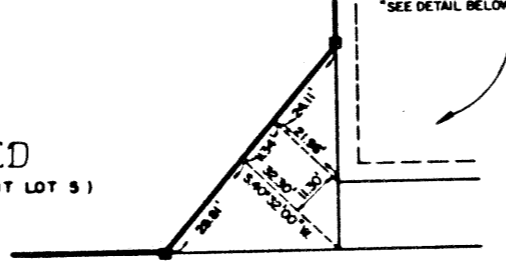


POINT OF COMMENCEMENT  
SOUTH ONE QUARTER CORNER SECTION 36,  
TOWNSHIP 40 SOUTH, RANGE 42 EAST,  
PALM BEACH COUNTY, FLORIDA



UNPLATTED  
LOXAHATCHEE  
RIVER

UNPLATTED  
(PART OF GOVERNMENT LOT 5)



NOTE:  
INDICATES LINE NOT SHOWN/DRAWN TO SCALE

- SURVEYOR'S NOTES AND LEGEND**
- BEARINGS SHOWN OR STATED HEREON, ARE BASED ON, OR ARE RELATIVE TO THE BEARING OF NORTH 01° 28' 00" WEST, ALONG THE EAST LINE OF THE PLAT OF PERIGON POINT AS RECORDED IN PLAT BOOK 36, PAGE 37, PUBLIC RECORDS OF PALM BEACH COUNTY, FLORIDA.
  - IN THOSE INSTANCES WHERE UTILITY/DRAINAGE STRUCTURES ARE CONSTRUCTED IN CONFLICT WITH THE PLATTED PERMANENT CONTROL POINTS (P.C.P.), IN CONFLICT WITH THE PLATTED PERMANENT CONTROL POINTS (P.C.P.), POSITIONAL STAGGLERS/STAGGLERS ARE PERMANENT CONTROL POINTS WILL BE SET TO REFERENCE THE PLATTED P.C.P. POSITION.
  - C/L DENOTES A CENTERLINE
  - S.F. DENOTES SQUARE FEET
  - ☐ DENOTES A SET 4-424 PERMANENT REFERENCE MARK (P.R.M.)
  - ⊙ DENOTES A SET 4-424 PERMANENT CONTROL POINT (P.C.P.)
  - ⊙ DENOTES A FOUND PERMANENT REFERENCE MARK (P.R.M.)
  - ⊙ DENOTES BOUNDARY CORNER NOT SET.
  - M.H.W.L. INDICATES APPROXIMATE MEAN HIGH WATER LINE.

THIS INSTRUMENT WAS PREPARED BY WILLIAM B. VAN COPEN, D.L.S., IN AND FOR THE OFFICES OF BENCH MARK LAND SURVEYING & MAPPING, INC., 4152 WEST BLUE HERON BOULEVARD, SUITE 124, RIVIERA BEACH, FLORIDA

**BENCH MARK LAND SURVEYING & MAPPING, INC.**

PLAT OF:  
**PERIGON POINT ADDITION**

DATE SET/CHKD	CHKD BY	DATE	BY
1/17/93	W.B.V.	1/17/93	W.B.V.
SCALE: 1" = 30'	ASB FILE: 888004	D.S. #: 882-004	SHEET: 2 OF 2

11813